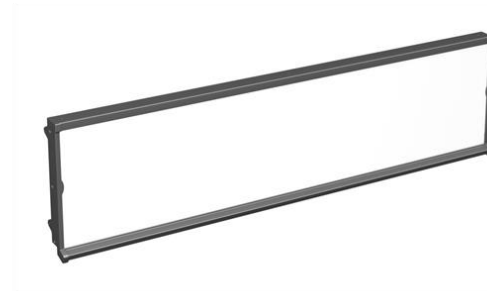


# ImageWorks - Impact



Key Attributes:  
½" vertical slots and shelf adjustments.  
Metal shelf supports.  
Clear trays with product pushers.

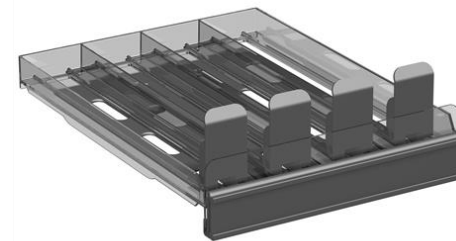
Adjustable fixture height.  
12" fixture width modularity.  
Easy planogram modularity.  
Optional storage space.



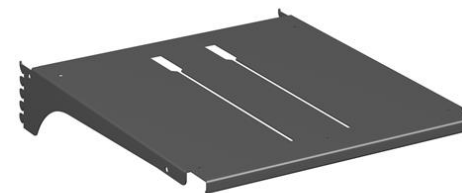
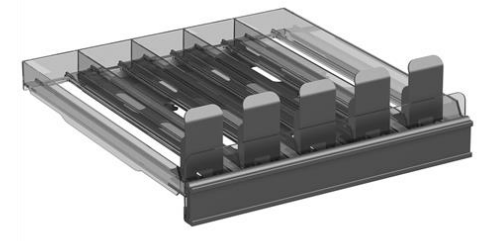
Header system with flip-up storage.



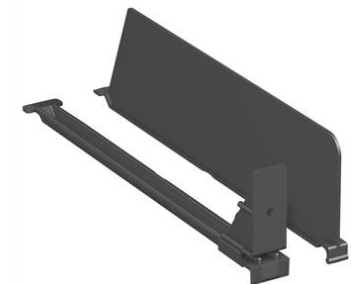
Lower storage area.



Product trays with spring merchandising



Metal shelf supports



Adjustable dividers and pushers